

Arthur Krupp®

FINE MELAMINE

Melamine, an extremely contemporary material that has been rediscovered, especially in the outdoor sector, because of its lightweight and resistance. It allows sophisticated yet practical outdoor equipment or buffets, a friendly poolside setting, a yachting trip or a relaxing moment in a hotel spa.

Melamina, un materiale estremamente contemporaneo, riscoperto soprattutto in ambito outdoor per via della sua leggerezza e robustezza. Permette di allestire in modo sofisticato ma funzionale buffet all'aperto, una situazione conviviale a bordo piscina o in barca, un momento di relax nella spa di un hotel.

FINE MELAMINE MOSAIC

ARTHUR KRUPP



An immortal decoration that is inspired by immersion in clear waters with multiple shades. From blue to emerald green to turquoise tones; a crystalline atmosphere of the ocean. Ideal for poolside catering, to present light meals indoors and outdoors. Matt finish, clean, linear and stackable design but also impactful and resistant, allowing to create spectacular presentations.

Una decorazione immortale che si ispira all'immersione in acque limpide dalle molteplici sfumature. Dal blu al verde smeraldo ai toni turchesi; un'atmosfera cristallina dell'oceano. Ideale per la ristorazione a bordo piscina, per presentare pasti leggeri all'interno e all'esterno. Finitura opaca, design pulito, lineare e impilabile ma anche di impatto e resistenti, permettendo di realizzare mise en place scenografiche.



Flat plate
Piatto piano
Teller flach
Assiette Plate

art.	Ø cm.
68106-05	15,3
68106-06	20,0
68106-07	25,5
68106-08	28,0



NEW

Deep plate
Piatto fondo
Teller tief
Assiette Creuse

art.	Ø cm.	h. cm.
68106-10	21,5	5,5



Flat plate
Piatto piano
Teller flach
Assiette Plate

art.	Ø cm.
68106B05	15,3
68106B06	20,0
68106B07	25,5
68106B08	28,0



Plate
Piatto
Teller
Assiette

art.	Ø cm.	h. cm.	fits/per
68106-01	14,0	1,8	68106-81
68106-02	18,0	1,8	-
68106-03	21,5	1,8	68106-82
68106-04	28,5	1,8	-



Bowl
Ciotola
Schüssel
Bol

art.	Ø cm.	h. cm.	ml.
68106-83	9,0	3	150
68106-80	11,4	5	240
68106-81	14,0	7	530
68106-82	21,5	10	2000



Oval plate
Piatto ovale
Teller oval
Assiette ovale

art.	dim. cm.	h. cm.
68106-29	17,6x10,8	1,8
68106-30	26,5x10,8	1,8
68106-31	32,5x13,25	1,8



Rectangular tray
Vassoio rettangolare
Rechteckiges Tablett
Plateau rectangulaire

art.	dim. cm.	h. cm.
68106-32	34,2x23,2	2



Square plate
Piatto quadro
Quadratische Platte
Assiette

art.	dim. cm.	h. cm.
68106Q01	17,5x17,5	1,3
68106Q02	22,5x22,5	1,4
68106Q03	28x28	1,4

FINE MELAMINE MOSAIC II

ARTHUR KRUPP



An elegant mosaic effect with multicolored tiles combined in an abstract way, enlivening any table by giving it a lively touch and creating the perfect atmosphere for a dining experience. Ideal for poolside catering, to present light meals indoors and outdoors. Linear and stackable design, matte finish.

Un elegante effetto mosaico le cui tessere multicolor combinate in modo astratto, ravvivano qualsiasi tavola donandole brio e creando la perfetta atmosfera per un'esperienza culinaria. Ideale per la ristorazione a bordo piscina, per presentare pasti leggeri all'interno e all'esterno. Design lineare e impilabile, finitura opaca.

ARTHUR KRUPP
FINE MELAMINE MOSAIC II



Flat plate

Piatto piano
Teller flach
Assiette Plate
Plato llano

art.	Ø cm.
68107-05	15,3
68107-06	20,0
68107-07	25,5
68107-08	28,0



Deep plate

Piatto fondo
Teller tief
Assiette Creuse
Plato hondo

art.	Ø cm.	h. cm.
68107-10	21,5	5,5



Plate

Piatto
Teller
Assiette
Plato

art.	Ø cm.	h. cm.	fits/per
68107-01	14,0	1,8	68107-81
68107-02	18,0	1,8	-
68107-03	21,5	1,8	68107-82
68107-09	25,0	1,8	-
68107-04	28,5	1,8	-



Bowl

Ciotola
Schüssel
Bol
Cuenco

art.	Ø cm.	h. cm.	ml.
68107-83	9,0	3	150



Bowl

Ciotola
Schüssel
Bol
Cuenco

art.	Ø cm.	h. cm.	ml.
68107-80	11,4	5	240
68107-81	14,0	7	530
68107-82	21,5	10	2000



Oval plate

Piatto ovale
Teller oval
Assiette ovale
Plato ovalado

art.	dim. cm.	h. cm.
68107-29	17,6x10,8	1,8
68107-30	26,5x10,8	1,8
68107-31	32,5x13,25	1,8



FINE MELAMINE GOURMET TWO-TONE

ARTHUR KRUPP



Black and white: the winning chromatic combination in a two-tone mini collection with a glossy finish. A mix of style truly extraordinary.

Bianco e nero: il binomio cromatico vincente in una mini collezione bicolore dalla finitura lucida. Un mix di stile veramente straordinario.

ARTHUR KRUPP
FINE MELAMINE GOURMET TWO-TONE



Bowl
Ciotola
Schüssel
Bol
Cuenco

art.	Ø cm.	h. cm.
68108W01	11	5
68108W02	16	7



Plate
Piatto
Teller
Assiette
Plato

art.	Ø cm.	h. cm.
68108W03	19	2
68108W04	24	3



Bowl
Ciotola
Schüssel
Bol
Cuenco

art.	Ø cm.	h. cm.
68108B01	11	5
68108B02	16	7



Plate
Piatto
Teller
Assiette
Plato

art.	Ø cm.	h. cm.
68108B03	19	2
68108B04	24	3



FINE MELAMINE GOURMET MATT

ARTHUR KRUPP



Black and white an ever-current contrast, iconic. Two extreme colors but in perfect balance with each other. Matt finish, a "basic" line, anything but ordinary. Simple and versatile in design, these dishes serve as an ideal backdrop for any menu. From simple lunches to gastronomically inspired dinners, the possibilities are practically endless. Chic and delightfully inspiring to create elegant presentations day after day.

Bianco e nero un contrasto sempre attuale, iconico. Due colori estremi ma in perfetto equilibrio tra loro. Finitura opaca, una linea "basic", tutt'altro che ordinaria. Semplici e versatili per design, questi piatti servono come sfondo ideale per qualsiasi menu. Dai pranzi sobri alle cene di ispirazione gastronomica, le possibilità sono praticamente infinite. Chic e deliziosamente stimolanti per creare eleganti presentazioni giorno dopo giorno.



Plate
Piatto
Teller
Assiette
Plato
art. Ø cm. h. cm.
68109W01 20 3



Plate
Piatto
Teller
Assiette
Plato
art. Ø cm. h. cm.
68109W02 24 3



Plate
Piatto
Teller
Assiette
Plato
art. Ø cm. h. cm.
68109W03 28 3



Oval plate
Piatto ovale
Teller oval
Assiette ovale
Plato ovalado
art. dim. cm. h. cm.
68109W04 16,5x8,5 3



Oval plate
Piatto ovale
Teller oval
Assiette ovale
Plato ovalado
art. dim. cm. h. cm.
68109W05 30x10 3



Oval plate
Piatto ovale
Teller oval
Assiette ovale
Plato ovalado
art. dim. cm. h. cm.
68109W06 40x10 3



Small bowl
Ciotolina
Kleine Schüssel
Petit bol
Cuenco pequeño
art. Ø cm. h. cm. ml.
68109W07 5-10 4,5 70



Lid
Coperchio
Deckel
Couvercle
Tapa
art. Ø cm. h. cm.
68109-07 6,5 4,5

SAN



Small bowl
Ciotolina
Kleine Schüssel
Petit bol
Cuenco pequeño
art. Ø cm. h. cm. ml.
68109B07 5-10 4,5 70



Plate
Piatto
Teller
Assiette
Plato
art. Ø cm. h. cm.
68109B01 20 3



Plate
Piatto
Teller
Assiette
Plato
art. Ø cm. h. cm.
68109B02 24 3



Plate
Piatto
Teller
Assiette
Plato
art. Ø cm. h. cm.
68109B03 28 3



Oval plate
Piatto ovale
Teller oval
Assiette ovale
Plato ovalado
art. dim. cm. h. cm.
68109B04 16,5x8,5 3



Oval plate
Piatto ovale
Teller oval
Assiette ovale
Plato ovalado
art. dim. cm. h. cm.
68109B05 30x10 3



Oval plate
Piatto ovale
Teller oval
Assiette ovale
Plato ovalado
art. dim. cm. h. cm.
68109B06 40x10 3

FINE MELAMINE THARA

ARTHUR KRUPP



An Asian Fusion mood. For those who love exotic cuisines, especially oriental ones, a mix of bowls and plates for the presentation of dishes belonging to different culinary traditions but each other close, for example Japanese, Chinese, Vietnamese and Thai.

Un mood Asian Fusion. Per chi ama le cucine esotiche, soprattutto quelle orientali, un mix di vasellame per la presentazione di piatti appartenenti a differenti tradizioni culinarie considerate vicine, ad esempio giapponese, cinese, vietnamita e thailandese.

ARTHUR KRUPP
FINE MELAMINE THARA



Rice bowl
Coppa riso
Reistasse
Bol à riz
Copa arroz

art.	Ø cm.	h. cm.	lt.	col.
44463-11	11	7	0,3	●



Tray
Vassoio
Platte
Plateau
Placa

art.	dim. cm.	col.
44464-23	23,5x7,5x2	●



Tray
Vassoio
Platte
Plateau
Placa

art.	dim. cm.	col.
44465-24	24,5x6,5x1,5	●



Bowl
Ciotola
Schüssel
Bol
Bol Ensalada

art.	Ø cm.	h. cm.	col.
44452-31	31	8,5	○
44452B31	31	8,5	●



Bowl
Ciotola
Schüssel
Bol
Bol Ensalada

art.	dim. cm.	col.
44453-14	14,5x12x5,5	○
44453B14	14,5x12x5,5	●



Bowl
Ciotola
Schüssel
Bol
Bol Ensalada

art.	Ø cm.	h. cm.	col.
44454-11	11,5	4	○
44454B11	11,5	4	●



Bowl
Ciotola
Schüssel
Bol
Bol Ensalada

art.	dim. cm.	col.
44455-09	9x7x2,5	○
44455B09	9x7x2,5	●



Bowl
Ciotola
Schüssel
Bol
Bol Ensalada

art.	dim. cm.	col.
44456-14	14x9x2,5	○
44456B14	14x9x2,5	●



Bowl
Ciotola
Schüssel
Bol
Bol Ensalada

art.	dim. cm.	col.
44457-32	32,5x14x4	○
44457B32	32,5x14x4	●



Tray
Vassoio
Platte
Plateau
Placa

art.	dim. cm.	col.
44461-20	18,5x18,5x4,5	○
44461B20	18,5x18,5x4,5	●



Bowl
Ciotola
Schüssel
Bol
Bol Ensalada

art.	dim. cm.	col.
44450-21	21x21x11	○
44450B21	21x21x11	●



Bowl
Ciotola
Schüssel
Bol
Bol Ensalada

art.	dim. cm.	col.
44450-12	12x12x4	○
44450B12	12x12x4	●



Bowl
Ciotola
Schüssel
Bol
Bol Ensalada

art.	dim. cm.	col.
44450-17	17,5x17,5x7	○
44450B17	17,5x17,5x7	●



Tray
Vassoio
Platte
Plateau
Placa

art.	dim. cm.	col.
44451-22	22x12x3	○
44451B22	22x12x3	●



Tray
Vassoio
Platte
Plateau
Placa

art.	dim. cm.	col.
44462-25	25x25x5,5	○
44462B25	25x25x5,5	●



Dish
Piatto
Teller
Assiette
Plato

art.	Ø cm.	h. cm.	col.
44459-28	28	3	○
44459B28	28	3	●



Bowl
Ciotola
Schüssel
Bol
Bol Ensalada

art.	dim. cm.	h. cm.	col.
44450-11	11x10	3	○
44450B11	11x10	3	●



Bowl
Ciotola
Schüssel
Bol
Bol Ensalada

art.	dim. cm.	h. cm.	col.
44450-13	13x11	3,5	○
44450B13	13x11	3,5	●



Bowl
Ciotola
Schüssel
Bol
Bol Ensalada

art.	dim. cm.	col.
44450-15	17,5x15,5x5,5	○
44450B15	17,5x15,5x5,5	●



Tray
Vassoio
Platte
Plateau
Placa

art.	dim. cm.	col.
44450-23	22x23,5x5,5	○
44450B23	22x23,5x5,5	●



FINE MELAMINE EASY BLACK & WHITE

ARTHUR KRUPP



Practical and functional in black and white colors. Serving and display trays, ideal for the presentation of sushi, desserts, appetizers for buffets. Essential and modern design. The perfect platform for culinary creations.

Pratici e funzionali nei colori bianco e nero. Vassoi da portata ed esposizione piatti, ideali per la presentazione di sushi, dessert, stuzzichini per i buffet. Design essenziale e moderno. La piattaforma perfetta per creazioni culinarie.



Square bowl
Ciotola quadra
Schüssel, quadratisch
Bol carré

art.	dim. cm.	col.
44847B09	9x9x4	●
44847B13	12,5x12,5x6,5	●
44847B20	19x19x9	●
44847-09	9x9x4	○
44847-13	12,5x12,5x6,5	○
44847-20	19x19x9	○



Tray
Vassoio
Tablett
Plateau
Bandeja

art.	GN	dim. cm.	col.
44843-11	1/1	53x32,5	○
44843-12	1/2	32,5x26,5	○
44843-24	2/4	53x16,2	○
44843-13	1/3	32,5x17,5	○
44843-14	1/4	26,5x16,2	○



Round dish
Piatto tondo
Platte, rund
Plat rond
Bandeja redonda

art.	Ø cm.	col.
44845-30	30	○
44845-41	41	○
44845-51	51	○



Sushi tray
Vassoio sushi
Sushiplatte
Plateau sushi
Bandeja sushi

art.	dim. cm.	col.
44842-31	31x10,5	○
44842-35	35,5x18	○
44842-30	30x21	○
44842-53	53x18	○



Round bowl
Ciotola tonda
Schüssel, rund
Bol ronde
Bol redondo

art.	Ø cm.	h. cm.	col.
44846B05	5,5	4,0	●
44846B09	9,0	4,5	●
44846B13	13,0	6,5	●
44846-05	5,5	4,0	○
44846-09	9,0	4,5	○
44846-13	13,0	6,5	○



Sushi tray
Vassoio sushi
Sushiplatte
Plateau sushi
Bandeja sushi

art.	dim. cm.	col.
44842B31	31x10,5	●
44842B53	53x18	●



Tray
Vassoio
Tablett
Plateau
Bandeja

art.	GN	dim. cm.	col.
44843B11	1/1	53x32,5	●
44843B12	1/2	32,5x26,5	●
44843B24	2/4	53x16,2	●
44843B13	1/3	32,5x17,5	●
44843B14	1/4	26,5x16,2	●



Tray, square
Vassoio quadro
Tablett, quadratisch
Plateau carré
Bandeja, cuadrada

art.	dim. cm.	col.
44841-18	18x18	○
44841-21	21x21	○
44841-26	26,5x26,5	○
44841-37	37x37	○
44841-51	51x51	○



Party plate
Piatino fingerfood
Fingerfood-Teller
Petit assiette
Platillo

art.	dim. cm.	col.
44844-01	9,5x9,5x1,5	○
44844B01	9,5x9,5x1,5	●



Tray, square
Vassoio quadro
Tablett, quadratisch
Plateau carré
Bandeja, cuadrada

art.	dim. cm.	col.
44841B51	51x51	●



Party spoon
Cucchiaio finger-food
Finger-food-Löffel
Cuiller
Cucharita

art.	dim. cm.	col.
44850-13	13,5x4,5	○



Party spoon
Cucchiaio finger-food
Finger-food-Löffel
Cuiller
Cucharita

art.	dim. cm.	col.
44850B13	13,5x4,5	●

FINE MELAMINE - EASY WOOD EFFECT



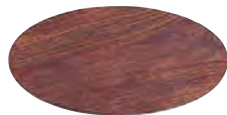
At first glance, these serving trays look like real wood. Not only perfect for indoor dining but outdoor as well. Ideal for displaying all types appetizers and or to serve entrées, hors d'oeuvres or desserts.

A prima vista, questi vassoi sembrano vero legno. Non solo perfetti per interni ma anche all'aperto. Ideali per esporre aperitivi di ogni tipo e per servire antipasti o dessert.



Rectangular platter
Vassoio rettangolare
Tablett, Rechteckig
Plateau rectangulaire
Bandeja rectangular

art.	GN	dim. cm.
44473-31	1/1	53x32,5x0,8
44473-32	1/2	32,5x26,5x0,8
44473-34	1/4	26x16x0,8
44473-33	1/3	32,5x17,5x0,8



Round platter
Vassoio rotondo
Tablett, Rund
Plateau rond
Bandeja redonda

art.	Ø cm.	h. cm.
44473-02	33	0,8
44473-03	43	0,8



Round platter with handle
Vassoio rotondo con manico
Tablett, Rund mit Griff
Plateau rond avec manche
Bandeja redonda con mango

art.	Ø cm.	h. cm.
44473-05	38	1,5



Rectangular platter with handle
Vassoio rettangolare con manico
Tablett Rechteckig mit Griff
Plateau rectangulaire avec manche
Bandeja rectangular con mango

art.	dim. cm.
44473-07	53x20x1,5



Rectangular platter with handle
Vassoio rettangolare con manico
Tablett Rechteckig mit Griff
Plateau rectangulaire avec manche
Bandeja rectangular con mango

art.	dim. cm.
44473-08	61x20x1,5

FINE MELAMINE - EASY SLATE EFFECT



Serving board

Tagliere
Servier-Brett
Plancha
Tabla

art.	Ø cm.	h. cm.
44470-30	30	1
44470-40	40	1



Platter

Plancia
Tablett
Plateau
Bandeja

art.	GN	dim. cm.
44470-11	1/1	53,0x32,5x1
44470-24	2/4	53,0x16,2x1
44470-12	1/2	32,5x26,5x1
44470-13	1/3	32,5x17,5x1
44470-14	1/4	26,5x16,5x1



Platter

Plancia
Tablett
Plateau
Bandeja

art.	dim. cm.
44470-73	20x10x2
44470-74	30x10x2
44470-75	30x15x2



Bowl

Ciotola
Schüssel
Bol
Bol Ensalada

art.	dim. cm.	lt.
44470-03	19x19x9	1,5
44470-04	25x25x12	3,8

Arthur Krupp®

TABLETOP TAVOLA

Placemats, salt and pepper mills, coasters, napkin holders, bread baskets, coffee & tea pots, etc. A full collection of accessories to create the perfect table. Unique products and collections that stylishly complete the look of any dining room.

Tovagliette, macinapepe e sale, sottobicchieri, portatovaglioli, cesti pane, vasellame, ecc. Una collezione completa di accessori per creare la tavola perfetta. Prodotti e collezioni unici che completano con stile il look di ogni sala da pranzo.

MILLS MACINE

ARTHUR KRUPP



Arthur Krupp mills are born from the collaboration of Arcturus with experts in seasoning for over 25 years. All products are designed and manufactured with commitment to flavor backed up with the best attention to the quality of products and performance of the mechanisms. Whether it is salt or pepper, often a few grains have the power to enrich and bloom the soul of a dish. The range is enriched with new colors, models and materials.

Le macine Arthur Krupp nascono dalla collaborazione di Arcturus con professionisti del gusto con un'esperienza di oltre 25 anni. Tutti i prodotti sono progettati e realizzati con l'impegno per il sapore supportato dalla massima attenzione per la qualità dei prodotti e alle prestazioni dei meccanismi. Sale e pepe sono gli ingredienti base per arricchire i nostri piatti. Grazie alle macine possiamo tritarli quando ci servono assicurandoci così che conservino freschezza e aroma. La gamma si arricchisce di nuovi colori, modelli e materiali.



AY

Pepper mill
Macinapepe
Pfeffermühle
Moulin à poivre
Molinillo pimienta

art.	h. cm.
69041P12	11,5
69041P16	16,0
69041P20	20,5

Shiny red. – Rosso lucido.



ARTHUR KRUPP
MILLS MACINE

AY

Salt mill
Macinasale
Salzmühle
Moulin à sel
Molinillo sal

art.	h. cm.
69041S12	11,5
69041S16	16,0
69041S20	20,5

Shiny red. – Rosso lucido.



AY

Pepper mill
Macinapepe
Pfeffermühle
Moulin à poivre
Molinillo pimienta

art.	h. cm.
69042P12	11,5
69042P16	16,0
69042P20	20,5

Shiny black. – Nero lucido.



AY

Salt mill
Macinasale
Salzmühle
Moulin à sel
Molinillo sal

art.	h. cm.
69042S12	11,5
69042S16	16,0
69042S20	20,5

Shiny black. – Nero lucido.



ABS

Pepper mill
Macinapepe
Pfeffermühle
Moulin à poivre
Molinillo pimienta

art.	h. cm.
69044P12	11,5
69044P16	16,0
69044P20	20,5

Matte grey. – Grigio opaco.



ABS

Salt mill
Macinasale
Salzmühle
Moulin à sel
Molinillo sal

art.	h. cm.
69044S12	11,5
69044S16	16,0
69044S20	20,5

Matte grey. – Grigio opaco.



ABS

Pepper mill
Macinapepe
Pfefermühle
Moulin à poivre
Molinillo pimienta

art.	h. cm.
69043P12	11,5
69043P16	16,0
69043P20	20,5

Matte black. – Nero opaco.



ABS

Salt mill
Macinasale
Salzmühle
Moulin à sel
Molinillo sal

art.	h. cm.
69043S12	11,5
69043S16	16,0
69043S20	20,5

Matte black. – Nero opaco.



SPECIAL MILLS - TOP GRINDING WITH GRIND SELECT FUNCTION



TOP GRINDING MILLS - Stainless Steel with acrylic spice chamber. The mechanism is located in the upper part to leave countertops free of residue, no mess. They also feature a grind select function with 5 settings for pepper and 3 for salt allowing quick and accurate changes from fine to coarse grinds. Select a fine grind for a big punch in sauces or soups or effortlessly switch to a more coarse grind for a more subtle but longer lasting taste, great for salads or steaks. As all Arthur Krupp mills they feature sharp ceramic mechanisms in the salt mill and carbon steel mechanism in the pepper mill.

MACINE INVERSA - Acciaio inox con serbatoio spezie in acrilico. Il meccanismo è collocato nella parte superiore. I piani di lavoro saranno sempre puliti, privi di residui di macinatura. Sono inoltre dotate di una funzione di preselezione della grana di macinatura con 5 impostazioni per il pepe e 3 per il sale che consentono cambi rapidi e precisi dalla grana fine a quella grossolana. Selezionate una macinatura fine per salse o zuppe per passare rapidamente senza fatica a una macinatura più grossolana per un gusto più deciso e persistente, ottimo per insalate o carne. Come tutte le macine Arthur Krupp, sono dotate di meccanismo in ceramica per il sale e in acciaio al carbonio per il pepe.



AY
SS

Pepper mill
Macinapepe
Pfefermühle
Moulin à poivre
Molinillo pimienta

art.	h. cm.
69033P18	18

Black gun.



AY
SS

Salt mill
Macinasale
Salzmühle
Moulin à sel
Molinillo sal

art.	h. cm.
69033S18	18

Silver.



SPECIAL MILLS - 2-IN-1 SALT & PEPPER



2-IN-1 MILL - Stainless Steel with acrylic spice chamber to show when it needs a refill. Adjustable grind mechanisms to change coarseness of the salt or pepper. Ceramic grinding mechanism for both salt & pepper chamber. This dual mill boasts a compact design which is ideal for those with limited storage and living space. Extremely easy to operate by turning the mill clockwise for pepper and anticlockwise for salt.

2-IN-1 - Acciaio inox con serbatoio spezie in acrilico per visualizzare quando è necessaria la ricarica. Macinatura regolabile per modificare la grana del sale o del pepe da fine a più grossolana. Meccanismi in ceramica. Questa doppia macina vanta un design compatto, ideale per chi ha poco spazio in cucina e sui tavoli. Estremamente facile da usare, ruotare in senso orario per il pepe e in senso antiorario per il sale.

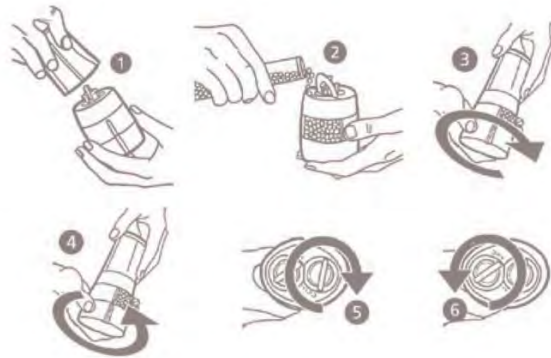


AY
SS

Salt & pepper mill
Macinasale & pepe
Salz u. Pfeffermühle
Moulin à sel et poivre
Molinillo sal y pimienta

art. h. cm.
69034-14 14

Silver.



DUO SALT & PEPPER MILL

AY SS



DUO salt & pepper mill
DUO macinapepe & sale
DUO Salz u. Pfeffermühle
DUO Moulin à sel et poivre
DUO Molinillo sal y pimienta
art. h. cm.
69003-02 17



W

Pepper mill
Macinapepe
Pfeffermühle
Moulin à poivre
Molinillo pimienta
art. h. cm.
69011P12 11,5
69011P16 16,0
69011P20 20,0
69011P32 32,0

Black vintage. – Nero vintage.



W

Salt mill
Macinasale
Salzmühle
Moulin à sel
Molinillo sal
art. h. cm.
69011S12 11,5
69011S16 16,0
69011S20 20,0
69011S32 32,0

Black vintage. – Nero vintage.



W

Pepper mill
Macinapepe
Pfeffermühle
Moulin à poivre
Molinillo pimienta
art. h. cm.
69014P12 11,5
69014P16 16,0
69014P20 20,5
69014P32 32,0

Natural light. – Naturale chiaro.



W

Salt mill
Macinasale
Salzmühle
Moulin à sel
Molinillo sal
art. h. cm.
69014S12 11,5
69014S16 16,0
69014S20 20,5
69014S32 32,0

Natural light. – Naturale chiaro.



W

Pepper mill
Macinapepe
Pfeffermühle
Moulin à poivre
Molinillo pimienta
art. h. cm.
69013P12 11,5
69013P16 16,0
69013P20 20,5
69013P32 32,0

Matte finish white. – Bianco opaco.



W

Salt mill
Macinasale
Salzmühle
Moulin à sel
Molinillo sal
art. h. cm.
69013S12 11,5
69013S16 16,0
69013S20 20,5
69013S32 32,0

Matte finish white. – Bianco opaco.



AY

Pepper mill
Macinapepe
Pfeffermühle
Moulin à poivre
Molinillo pimienta

art.	h. cm.
69001P12	11,5
69001P16	16,0
69001P20	20,0
69001P32	32,0



AY

Salt mill
Macinasale
Salzmühle
Moulin à sel
Molinillo sal

art.	h. cm.
69001S12	11,5
69001S16	16,0
69001S20	20,0
69001S32	32,0





AY

Pepper mill
Macinapepe
Pfeffermühle
Moulin à poivre
Molinillo pimienta

art.	h. cm.
69002P14	14
69002P19	19



AY

Salt mill
Macinasale
Salzmühle
Moulin à sel
Molinillo sal

art.	h. cm.
69002S14	14
69002S19	19



AY

SS

Pepper mill
Macinapepe
Pfeffermühle
Moulin à poivre
Molinillo pimienta

art.	h. cm.
69020P10	10
69021P10	10
69022P10	10

Gloss finish. – Finitura lucida.



AY

SS

Salt mill
Macinasale
Salzmühle
Moulin à sel
Molinillo sal

art.	h. cm.
69020S10	10
69021S10	10
69022S10	10

Gloss finish. – Finitura lucida.



AY

SS

Pepper mill
Macinapepe
Pfeffermühle
Moulin à poivre
Molinillo pimienta

art.	h. cm.
69005P13	13



AY

SS

Salt mill
Macinasale
Salzmühle
Moulin à sel
Molinillo sal

art.	h. cm.
69005S13	13



AY

SS

Pepper mill
Macinapepe
Pfeffermühle
Moulin à poivre
Molinillo pimienta

art.	h. cm.
69006P13	13



AY

SS

Salt mill
Macinasale
Salzmühle
Moulin à sel
Molinillo sal

art.	h. cm.
69006S13	13





AY

Chili grinder
Macinapeperoncino
Paprikamühle
Moulin à piment
Molinillo chile
art. h. cm.
69030-13 13



AY

Nutmeg mill
Macina noce moscata
Muskatmühle
Moulin à mouscade
Molinillo nuez moscada
art. h. cm.
69032-09 9,5



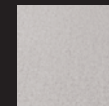
PLACEMATS

ARTHUR KRUPP

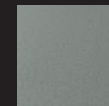


Placemats are a key element in the presentation of a restaurant, helping to create a unique experience for customers both indoors and outdoors. They contribute to an elegant atmosphere, offering a neat and clean presentation of the tables. Easy to clean and maintain: a simple wipe with a sponge is enough to remove stains or food residues, allowing staff to save time and resources when maintaining table linens. They are also easy to stack and store when not in use, saving space. Environmental sustainability: by choosing placemats, you help reduce environmental impact, saving CO2 and water.

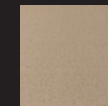
Le tovaglie americane sono un elemento fondamentale nella presentazione del ristorante e nel creare un'esperienza unica per i clienti, sia all'interno che all'esterno. Contribuiscono a creare un'atmosfera elegante, offrendo una presentazione ordinata e pulita dei tavoli. Facili da pulire e mantenere: basta una semplice passata con una spugna per rimuovere macchie o residui di cibo, permettendo al personale di risparmiare tempo e risorse nella manutenzione della biancheria da tavola. Sono inoltre facili da impilare e riporre quando non vengono utilizzati, risparmiando spazio. Sostenibilità ambientale: scegliendo le tovaglie americane, aiuti a ridurre l'impatto ambientale, risparmiando CO2 e acqua.



WHITE SILVER



SLATE GRAY



LIGHT BROWN

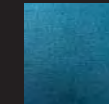


BEIGE

PEAR

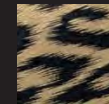


LIGHT

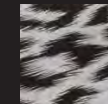


PEARL

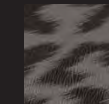
BLUE



GOLD

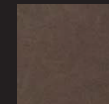


SILVER

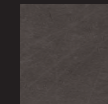


ANTHRACITE

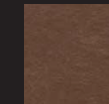
TIGER PEARL



BRONZE

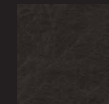


ANTHRACITE

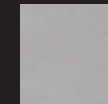


COPPER

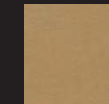
PLAIN



DARK BROWN



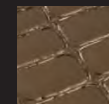
SILVER



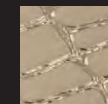
GOLD



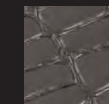
GOLD



COPPER

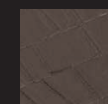


CLEAR GOLD

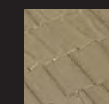


ANTHRACITE

CROCODILE



COPPER



GOLD

SKIN PEARL

**ARTHUR KRUPP
PLACEMATS**



Placemat
Tovaglietta americana
Tischset
Set de table
Mantelin

art.	dim. cm.	U. Pack
66529-16	45x30	6

Pearl White Silver.
EVA, plastic material based on polyethylene. – EVA (Etilene Vinil Acetato).



Placemat
Tovaglietta americana
Tischset
Set de table
Mantelin

art.	dim. cm.	U. Pack
66529-17	45x30	6

Pearl Slate Grey.
EVA, plastic material based on polyethylene. – EVA (Etilene Vinil Acetato).



Placemat
Tovaglietta americana
Tischset
Set de table
Mantelin

art.	dim. cm.	U. Pack
66529-18	45x30	6

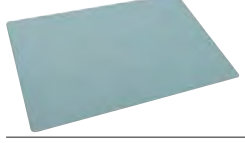
Pearl Light Brown.
EVA, plastic material based on polyethylene. – EVA (Etilene Vinil Acetato).



Placemat
Tovaglietta americana
Tischset
Set de table
Mantelin

art.	dim. cm.	U. Pack
66529-19	45x30	6

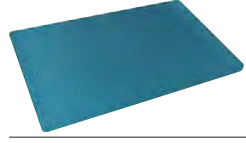
Pearl Beige.
EVA, plastic material based on polyethylene. – EVA (Etilene Vinil Acetato).



Placemat
Tovaglietta americana
Tischset
Set de table
Mantelin

art.	dim. cm.	U. Pack
66529-20	45x30	6

Light Blue.
EVA, plastic material based on polyethylene. – EVA (Etilene Vinil Acetato).



Placemat
Tovaglietta americana
Tischset
Set de table
Mantelin

art.	dim. cm.	U. Pack
66529-21	45x30	6

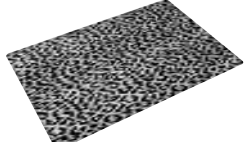
Pearl Blue.
EVA, plastic material based on polyethylene. – EVA (Etilene Vinil Acetato).



Placemat
Tovaglietta americana
Tischset
Set de table
Mantelin

art.	dim. cm.	U. Pack
66529-01	45x30	6

Tiger Pearl Gold.
EVA, plastic material based on polyethylene. – EVA (Etilene Vinil Acetato).



Placemat
Tovaglietta americana
Tischset
Set de table
Mantelin

art.	dim. cm.	U. Pack
66529-02	45x30	6

Tiger Pearl Silver.
EVA, plastic material based on polyethylene. – EVA (Etilene Vinil Acetato).



Placemat
Tovaglietta americana
Tischset
Set de table
Mantelin

art.	dim. cm.	U. Pack
66529-03	45x30	6

Tiger Pearl Anthracite.
EVA, plastic material based on polyethylene. – EVA (Etilene Vinil Acetato).

Arthur Krupp®



Placemat
Tovaglietta americana
Tischset
Set de table
Mantelin

art.	dim. cm.	U. Pack
66529-04	45x30	6

Plain Bronze.
EVA, plastic material based on polyethylene. – EVA (Etilene Vinil Acetato).



Placemat
Tovaglietta americana
Tischset
Set de table
Mantelin

art.	dim. cm.	U. Pack
66529-05	45x30	6

Plain Anthracite.
EVA, plastic material based on polyethylene. – EVA (Etilene Vinil Acetato).



Placemat
Tovaglietta americana
Tischset
Set de table
Mantelin

art.	dim. cm.	U. Pack
66529-06	45x30	6

Plain Copper.
EVA, plastic material based on polyethylene. – EVA (Etilene Vinil Acetato).



Placemat
Tovaglietta americana
Tischset
Set de table
Mantelin

art.	dim. cm.	U. Pack
66529-07	45x30	6

Plain Dark Brown.
EVA, plastic material based on polyethylene. – EVA (Etilene Vinil Acetato).



Placemat
Tovaglietta americana
Tischset
Set de table
Mantelin

art.	dim. cm.	U. Pack
66529-08	45x30	6

Plain Silver.
EVA, plastic material based on polyethylene. – EVA (Etilene Vinil Acetato).



Placemat
Tovaglietta americana
Tischset
Set de table
Mantelin

art.	dim. cm.	U. Pack
66529-09	45x30	6

Plain Gold.
EVA, plastic material based on polyethylene. – EVA (Etilene Vinil Acetato).



Placemat
Tovaglietta americana
Tischset
Set de table
Mantelin

art.	dim. cm.	U. Pack
66529-10	45x30	6

Crocodile Gold.
EVA, plastic material based on polyethylene. – EVA (Etilene Vinil Acetato).



Placemat
Tovaglietta americana
Tischset
Set de table
Mantelin

art.	dim. cm.	U. Pack
66529-11	45x30	6

Crocodile Copper.
EVA, plastic material based on polyethylene. – EVA (Etilene Vinil Acetato).



Placemat
Tovaglietta americana
Tischset
Set de table
Mantelin

art.	dim. cm.	U. Pack
66529-12	45x30	6

Crocodile Clear Gold.
EVA, plastic material based on polyethylene. – EVA (Etilene Vinil Acetato).

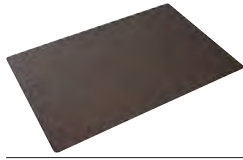
**ARTHUR KRUPP
PLACEMATS**



Placemat
Tovaglietta americana
Tischset
Set de table
Mantelin

art. dim. cm. U. Pack
66529-13 45x30 6

Crocodile Anthracite.
EVA, plastic material based on polyethylene. –
EVA (Etilene Vinil Acetato).



Placemat
Tovaglietta americana
Tischset
Set de table
Mantelin

art. dim. cm. U. Pack
66529-14 45x30 6

Skin Pearl Copper.
EVA, plastic material based on polyethylene. –
EVA (Etilene Vinil Acetato).



Placemat
Tovaglietta americana
Tischset
Set de table
Mantelin

art. dim. cm. U. Pack
66529-15 45x30 6

Skin Pearl Gold.
EVA, plastic material based on polyethylene. –
EVA (Etilene Vinil Acetato).



NEW

Placemat, set 6 pcs
Tovaglietta americana, set 6 pz
Tischset, 6 Stk
Set de table, 6 pcs
Mantelin, 6 piezas

art. dim. cm. U. Pack
66530-01 43x30 6

Sage Green.
Recycle PU leather with painted edge. – Pelle PU
riciclata con bordo verniciato.

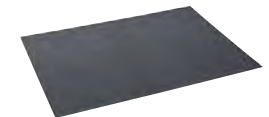


NEW

Placemat, set 6 pcs
Tovaglietta americana, set 6 pz
Tischset, 6 Stk
Set de table, 6 pcs
Mantelin, 6 piezas

art. dim. cm. U. Pack
66530-02 43x30 6

Dove Grey.
Recycle PU leather with painted edge. – Pelle PU
riciclata con bordo verniciato.



NEW

Placemat, set 6 pcs
Tovaglietta americana, set 6 pz
Tischset, 6 Stk
Set de table, 6 pcs
Mantelin, 6 piezas

art. dim. cm. U. Pack
66530-03 43x30 6

Anthracite.
Recycle PU leather with painted edge. – Pelle PU
riciclata con bordo verniciato.

ARTHUR KRUPP
PLACEMATS



NEW

Placemat, set 6 pcs

Tovaglietta americana, set 6 pz
Tischset, 6 Stk
Set de table, 6 pcs
Mantelín, 6 piezas

art. dim. cm. U. Pack
66530-04 43x30 6

Brown.
Recycle PU leather with painted edge. – Pelle PU riciclata con bordo verniciato.



NEW

Placemat, set 6 pcs

Tovaglietta americana, set 6 pz
Tischset, 6 Stk
Set de table, 6 pcs
Mantelín, 6 piezas

art. dim. cm. U. Pack
66530-05 43x30 6

Mustard.
Recycle PU leather with painted edge. – Pelle PU riciclata con bordo verniciato.



NEW

Placemat, set 6 pcs

Tovaglietta americana, set 6 pz
Tischset, 6 Stk
Set de table, 6 pcs
Mantelín, 6 piezas

art. dim. cm. U. Pack
66530-06 43x30 6

Bordeaux.
Recycle PU leather with painted edge. – Pelle PU riciclata con bordo verniciato.



NEW

Placemat, set 6 pcs

Tovaglietta americana, set 6 pz
Tischset, 6 Stk
Set de table, 6 pcs
Mantelín, 6 piezas

art. dim. cm. U. Pack
66530-20 40x30 6

Petrol.
PP printing with rubber backing. – PP stampato con retro in gomma.



NEW

Placemat, set 6 pcs

Tovaglietta americana, set 6 pz
Tischset, 6 Stk
Set de table, 6 pcs
Mantelín, 6 piezas

art. dim. cm. U. Pack
66530-21 40x30 6

Bordeaux.
PP printing with rubber backing. – PP stampato con retro in gomma.



NEW

Placemat, set 6 pcs

Tovaglietta americana, set 6 pz
Tischset, 6 Stk
Set de table, 6 pcs
Mantelín, 6 piezas

art. dim. cm. U. Pack
66530-22 40x30 6

Beige.
PP printing with rubber backing. – PP stampato con retro in gomma.



NEW

Placemat, set 6 pcs

Tovaglietta americana, set 6 pz
Tischset, 6 Stk
Set de table, 6 pcs
Mantelín, 6 piezas

art. Ø cm. U. Pack
66530-30 40 6

Sage.
PU leather look with rubber backing. – PU similpelle con retro in gomma.



NEW

Placemat, set 6 pcs

Tovaglietta americana, set 6 pz
Tischset, 6 Stk
Set de table, 6 pcs
Mantelín, 6 piezas

art. Ø cm. U. Pack
66530-31 40 6

Beige.
PU leather look with rubber backing. – PU similpelle con retro in gomma.



NEW

Placemat, set 6 pcs

Tovaglietta americana, set 6 pz
Tischset, 6 Stk
Set de table, 6 pcs
Mantelín, 6 piezas

art. Ø cm. U. Pack
66530-32 40 6

Orange.
PU leather look with rubber backing. – PU similpelle con retro in gomma.



NEW

Placemat, set 6 pcs

Tovaglietta americana, set 6 pz
Tischset, 6 Stk
Set de table, 6 pcs
Mantelín, 6 piezas

art. Ø cm. U. Pack
66530-33 40 6

Grey.
PU leather look with rubber backing. – PU similpelle con retro in gomma.



NEW

Placemat, set 6 pcs

Tovaglietta americana, set 6 pz
Tischset, 6 Stk
Set de table, 6 pcs
Mantelín, 6 piezas

art. Ø cm. U. Pack
66530-34 40 6

Petrol.
PU leather look with rubber backing. – PU similpelle con retro in gomma.



NEW

Placemat, set 6 pcs

Tovaglietta americana, set 6 pz
Tischset, 6 Stk
Set de table, 6 pcs
Mantelín, 6 piezas

art. Ø cm. U. Pack
66530-35 40 6

Bordeaux.
PU leather look with rubber backing. – PU similpelle con retro in gomma.

662-663 INOX STAINLESS STEEL

ARTHUR KRUPP

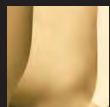


Practical elegance. The brightness of the steel will get your guests carried away with its shining. Whether for breakfast, brunch or happy hour, during a business lunch or a romantic candlelight dinner, all table settings will be stylish and chic.

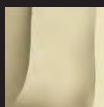
Pratica eleganza. La lucentezza dell'acciaio coinvolgerà i vostri ospiti con riflessi di luce. Ogni tavola sarà così valorizzata da uno stile ricercato in ogni momento della giornata: a colazione, per il brunch o l'aperitivo, durante i pranzi d'affari, nel corso di romantiche cene a lume di candela e nei dopocena tra amici.



SILVERPLATED



GOLD



CHAMPAGNE

Special Finishing on demand Finiture speciali su richiesta



Coffee pot
Caffettiera
Kaffeekanne
Cafetière
Cafetera

art.	lt.
66201-03	0,3
66201-06	0,6
66201-09	0,9
66201-16	1,6



Tea pot
Teiera
Teekanne
Thière
Tetera

art.	lt.
66208-03	0,3
66208-06	0,6
66208-09	0,9



Creamer
Cremera
Gießer
Crémier
Jarrilla

art.	lt.
66204-01	0,15



Milk pot
Lattiera
Milchgießer
Pot à lait
Jarra leche

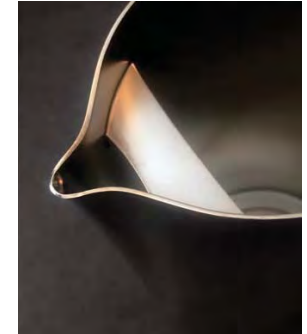
art.	lt.
66206-03	0,3
66206-06	0,6
66206-09	0,9



Water jug
Brocca acqua
Eiswasserkrug
Carafe à eau
Jarra agua

art.	lt.
66216-16	1,6

With ice guard. – Con ferma ghiaccio.



Small bowl
Ciotolina
Schale
Petite coupelle
Bol

art.	dim. cm.
66290-25	11,5x9,5x3,5



Sugar bowl with cover
Zuccheriera c/coperchio
Zuckerdose mit Deckel
Sucrier avec couvercle
Azucarero con tapa

art.	dim. cm.
66210-25	9,5x7x5



Sugar bowl
Zuccheriera
Zuckerdose
Sucrier
Azucarero

art.	dim. cm.
66210-05	9,5x7x5



Milk pot with lid
Lattiera con coperchio
Milchgießer mit Deckel
Pot à lait avec couvercle
Jarra de leche con tapa

art.	lt.
66303-01	0,15
66303-03	0,30
66303-06	0,60



Cappuccino milk pot
Lattiera cappuccino
Capuccino-Milchkanne
Pot à cappuccino
Jarra cappuccino

art.	lt.
66307-06	0,6
66307-09	0,9



Spoon holder
Porta cucchiaini
Kaffeelöffelbehälter
Porte cuillères
Porta cucharas

art.	Ø cm.	h.
66313-03	6	9



Straw holder
Porta cannucce
Röhrchenbehälter
Porte chalumeaux
Porta canutillos

art.	Ø cm.	h.
66313-06	8	12



Napkin holder
Portatovaglioli
Serviettenhalter
Porte serviettes
Servilletero

art.	dim. cm.
66391-00	10x3x8



Tea bag caddy
Portabustine thé
Teebeutel-Halter
Porte sachet de thé
Contenedor sobres té

art.	dim. cm.
66375-00	12,5x7x4



Sugar packet holder
Portabustine zucchero
Zuckerbeutelschale
Conteneur à sucre
Contenedor sobres azúcar

art.	dim. cm.
66374-00	12,5x6x4



Small bowl
Coppetta
Schale, klein
Petit bol
Copa

art.	Ø cm.	h.
66388-10	8	3,5



Oval bread basket
Cesto pane, ovale
Brotschale, ovale
Panier à pain, ovale
Cesta pan, oval

art.	dim. cm.
66392-18	18x22x5
66392-22	22x16x5



Jam/honey stand
Portamarmellata
Ständer für Konfitürgläser
Porte confitures
Soporte confituras
art. h.
66367-03 17,5



Jam/honey stand
Portamarmellata
Ständer für Konfitürgläser
Porte confitures
Soporte confituras
art. h.
66367-06 15,5



Pastry stand, 2 tiers
Alzata dolci, 2 piani
Gebäckständer, 2-stufig
Serveur muet, 2 étages
Soporte dulces, 2 niveles
art. Ø cm. h.
66339-02 12-16 20



Glass coaster
Sottobicchiere
Gläser-teller
Sous-verre
Piatto bajo vasos
art. Ø cm.
66359-10 10



Bottle coaster
Sottobottiglia
Flaschenteller
Sous bouteille
Piatto bajo botellas
art. Ø cm.
66359-12 12



Bread dish
Piattino pane
Brotteller
Petite plat à pain
Plato para pan
art. Ø cm.
66392-16 16



Show plate
Piatto presentazione
Platzteller
Plat de présentation
Plato de presentación
art. Ø cm.
66332-32 32



Oil and vinegar stand
Porta olio/acetato
Essig u. Öl-Stand
Porte huile et vinaigre
Soporte para aceite y vinagre
art. dim. cm.
66362-02 12,5x6x27



Plate cover
Copripiatto
Tellerlocke
Cloche
Cubreplatos
art. Ø cm.
66340-19 19,0
66340-20 20,0
66340-24 24,0
66340-25 25,0
66340-26 26,0
66340-76 26,5
66340-27 27,0
66340-77 27,5



Plate cover

Copripiatto
Tellerlocke
Cloche

Cubreplatos

art.	Ø cm.
66340-28	28,0
66340-78	28,5
66340-29	29,0
66340-79	29,5
66340-30	30,0
66340-31	31,0
66340-81	31,5
66340-32	32,0
66340-83	33,5



Cash tray with spring, s/s 18 Cr

Vassoio conto con molla, inox 18 Cr
Rechnungstablent mit Feder, Edelstahl 18 Cr
Porte note avec pince, inox 18 Cr

Bandeja cuentas con resorte, acero 18 Cr

art.	dim. cm.
66318-29	19x14

**ARTHUR KRUPP
662-663 INOX STAINLESS STEEL**



Cash tray, s/s 18 Cr

Vassoio conto, inox 18 Cr
Rechnungstablent, Edelstahl 18 Cr
Plateau porte-monnaie, inox 18 Cr

Bandeja cuentas, acero 18 Cr

art.	dim. cm.
66318-19	19x14
66318-22	22x15



Bill Holder, 18 Cr stainless steel

Set porta conto, inox 18 Cr
Rechnungshalter, Edelstahl 18 Cr
Porte-addition, inox 18 Cr
Porta facturas, acero 18 Cr

art.	dim. cm.
66318-39	20x16



Fish dish

Piatto pesce
Fischplatte
Plat à poisson

Bandeja pescado

art.	dim. cm.
66345-55	55x23
66345-65	65x27
66345-74	74x29



Tray with handles

Vassoio con maniglie
Tablett mit Griffe
Plateau avec anses

Bandeja con asas

art.	dim. cm.
66324-40	40x26
66324-50	50x38
66324-65	65x50
66324-85	85x50
66324-99	100x50



Tray

Vassoio
Tablett
Plateau

Bandeja

art.	dim. cm.
66320-28	28x20
66320-35	35x30
66320-40	40x26
66320-50	50x38
66320-65	65x50
66320-85	85x50
66320-99	100x50



Tray, round

Vassoio tondo
Tablett, rund
Plateau rond

Bandeja redonda

art.	Ø cm.
66326-30	30
66326-35	35
66326-40	40
66326-60	60
66326-80	80



Oval meat dish

Piatto ovale
Bratenplatte, oval
Plat ovale

Bandeja oval ilana

art.	dim. cm.
66325-30	30x19
66325-35	35x22
66325-41	41x26
66325-46	46x29
66325-54	54x37
66325-85	85x58
66325-99	100x68